

**P 170 T** *Smart*

**PALFINGER**

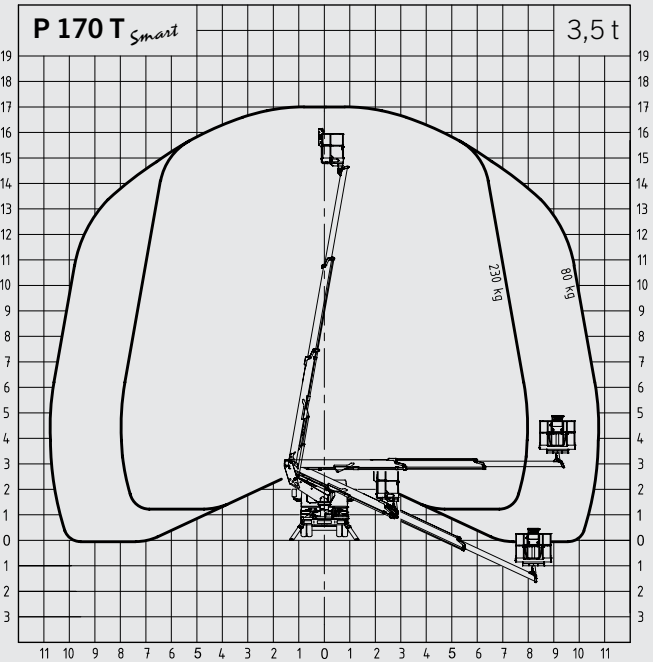
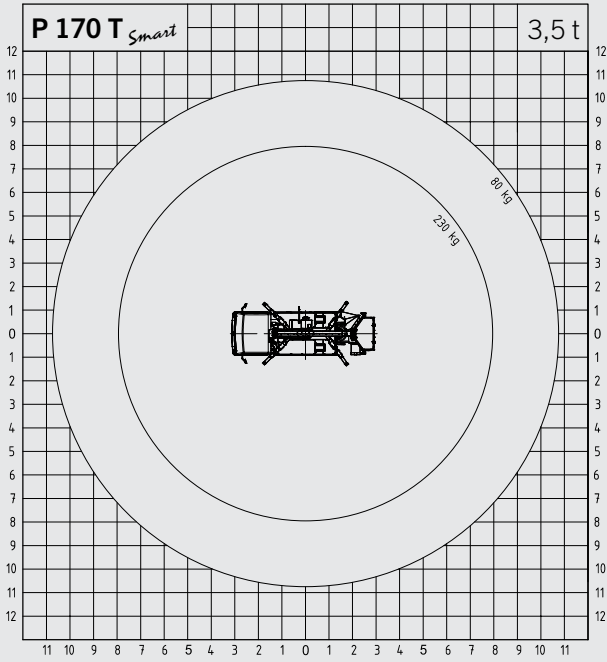
LIFETIME EXCELLENCE

**SAFETY AND PERFORMANCE IN ALL  
AREAS. EASY TO USE.**

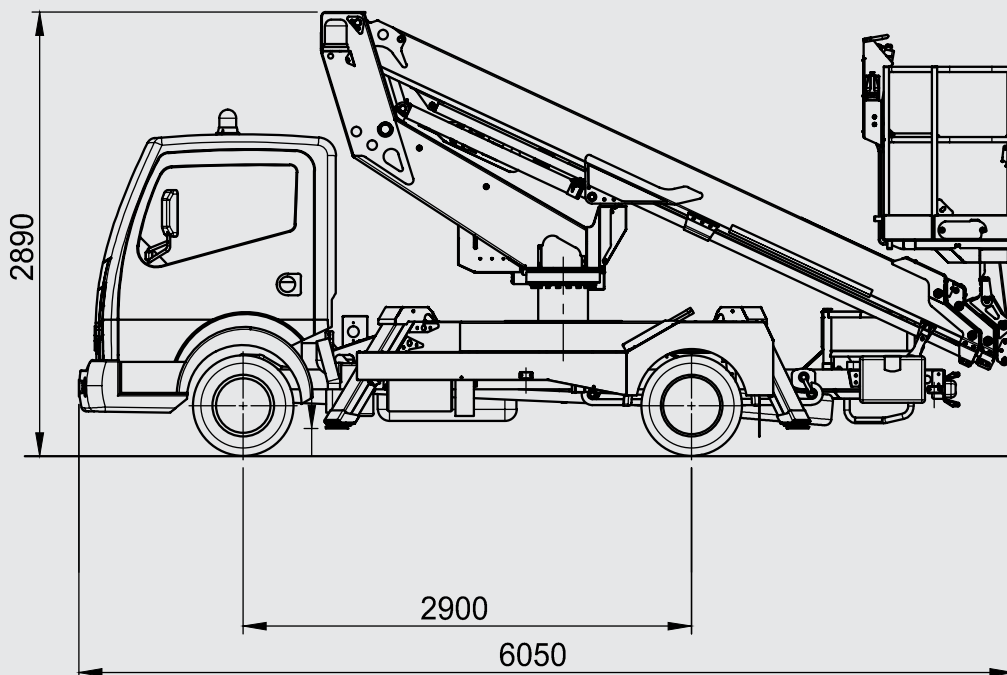


# P 170 T *Smart*

## WORKING DIAGRAMS



## DIMENSIONS





- Small & clever for use in city centres
- Compact design and easy operation
- Fully hydraulic operation
- Ergonomic design
- High manoeuvrability thanks to the extremely short wheelbase
- Safe working
- Professional PALFINGER quality

## TECHNICAL SPECIFICATIONS

|                              |                    |
|------------------------------|--------------------|
| Max. working height          | 17.0 m             |
| Max. basket bottom height    | 15.0 m             |
| Max. outreach                | 10.8 m             |
| Angle of main boom           | -25° to + 80°      |
| Rotation angle of turntable  | 370°               |
| Rotation angle of basket     | 2 x 90°            |
| Basket load                  | 230 kg             |
| Size of basket               | 1.4 x 0.85 x 1.1 m |
| Height in transport position | 2.89 m             |
| Width in transport position  | 2.1 m              |
| Total length                 | 6.1 m              |
| Total weight                 | 3200 kg            |

## OPTIONAL

|   |
|---|
| Fiberglass basket                           |
| Insulation 1000 V                           |
| Aluminium Side bars 200 mm                  |
| Basket load device                          |
| Electric motor 230 V                        |
| Working adjustable light 60 W on the basket |
| Customised paintwork boom                   |

# LIFETIME EXCELLENCE

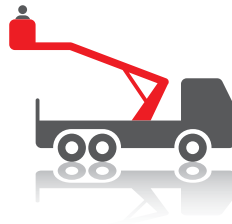
THE RESULT IS **PALFINGER ACCESS PLATFORMS** FEATURING THE MOST STATE-OF-THE-ART HEIGHT TECHNOLOGY THAT ACHIEVE ABSOLUTE PEAK PERFORMANCES, EVEN WHEN CONFRONTED WITH THE MOST DIFFICULT OF JOBS IN PRACTICE. **DEVELOPED FOR THE GLOBAL MARKET, DESIGNED FOR THE FUTURE.**

BETTER  
SOLUTIONS

BETTER  
EFFICIENCY

BETTER  
ERGONOMICS

HIGHER VALUE  
RETENTION



HIGHER  
AVAILABILITY

HIGHER  
SERVICEABILITY

BETTER  
ECOLOGY

MORE  
RELIABILITY

For further information please visit: [www.palfinger.com/thebrand](http://www.palfinger.com/thebrand)