

# LIFT ADJUSTER



OUR PROMISE:

# LIFT SAFETY.

Would you drive your  
car without wearing  
a seatbelt?

**A UNIQUE FEATURE,  
ONLY FROM TADANO.**

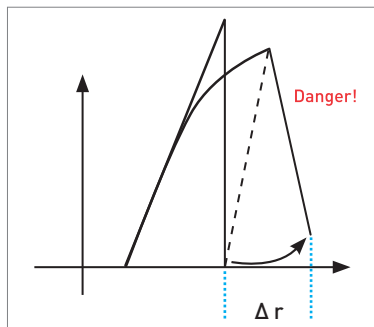
# LIFT ADJUSTER BETTER SAFE THAN SORRY.

## WORK SAFELY WITH YOUR CRANE – USE OUR LIFT ADJUSTER.

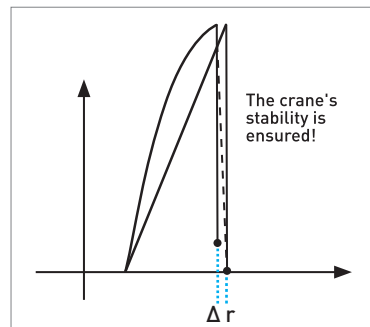
At TADANO, safety is a prime consideration. Our Lift Adjuster system is the only one of its kind, and it enhances safety on construction sites like never before.

### FOR EVERYDAY LIFTING, WE TRUST OPERATORS TO BE THE EXPERT

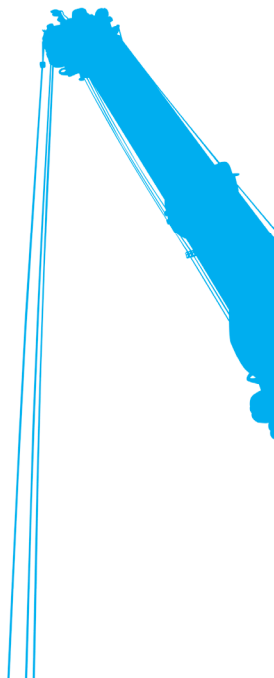
The Lift Adjuster is a technical control system that allows operators to monitor the potential movement of a heavy load. When activated, the system senses boom deflection and adjusts the hoist cylinder to compensate for any radius changes. Without the benefit of this feature, crane operators must manually adjust the main boom to a steeper position in order to prevent endangering valuable cargo or people on-site. On a routine basis, operators continuously monitor the load, load environment and crane instruments so that they are always aware of the current working radius. Since most operators have a lot of experience and are used to the behavior of their crane in many situations, this is no problem. But what happens to a heavy load if the crane is unfamiliar or if an operator is still new to the industry?



WITHOUT Lift Adjuster



WITH Lift Adjuster





“I HAVE 25 YEARS OF EXPERIENCE AS A CRANE OPERATOR, BUT I STILL USE THE LIFT ADJUSTER IF I HAVE NOT BEEN OPERATING A CERTAIN CRANE FOR A LONG TIME. SAFETY IS ALWAYS MY FIRST CONCERN!”

Johannes Gruner · Crane operator at TADANO FAUN GmbH

## UNFAMILIAR CRANES OR LOADS CAN CAUSE ACCIDENTS

Everyday expectations change a lot when, for example, inexperienced crane operators are faced with an unfamiliar crane. Without a wealth of working knowledge about boom deflection or load oscillation, this new operator will probably focus mainly on the crane instruments to keep the load radius constant. This doesn't leave a lot of time to monitor the actual behavior of the load and the people working around the crane. This increases the risk of accidents.

Safety becomes even more of a concern when operators cannot see the load they are lifting. In a blind situation, fixed obstructions can be a problem if the load swings more than expected. Valuable cargo can be damaged and the safety of employees is also put at risk during this operation.

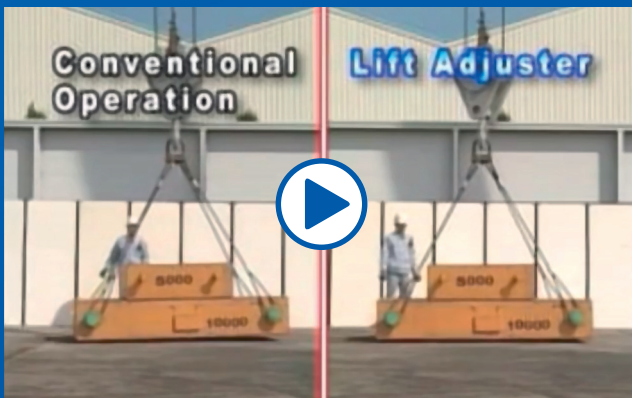
## ENSURE LIFTS ARE SAFE REGARDLESS OF THE OPERATOR OR LOAD

The answer to these safety problems is the Tadano Lift Adjuster. Anytime a crane operator is not familiar with the crane or load in question, he can activate the Lift Adjuster with the press of a button. Crane control then corrects the working radius automatically.

No matter how much experience a crane operator has, one person can only pay attention to so many factors at once. Even a brief shift in attention can have catastrophic results on a job-site for personnel or cargo being lifted. The Lift Adjuster system maintains the load radius, which allows your operators to dedicate their full attention to the critical task of lifting the load. Even our own crane operators with many years of experience on Tadano cranes like to revert to the Lift Adjuster if they feel unsure, as they already know that taking precautions pays off if even a single accident can be prevented.

By the way ... the lift Adjuster follows the same principle - just vice versa - for putting down the load. We call this feature the “Release Adjuster”.

WANT TO FIND OUT MORE?  
WATCH OUR LIFT  
ADJUSTER VIDEO:



[www.tadanofaun.de/Lift\\_Adjuster\\_e](http://www.tadanofaun.de/Lift_Adjuster_e)

